



DRILLING LOG



FROM : (mt) 170

TO : (mt) 2451

SCALE : 1/ 1000

Well Name : Cobia F27

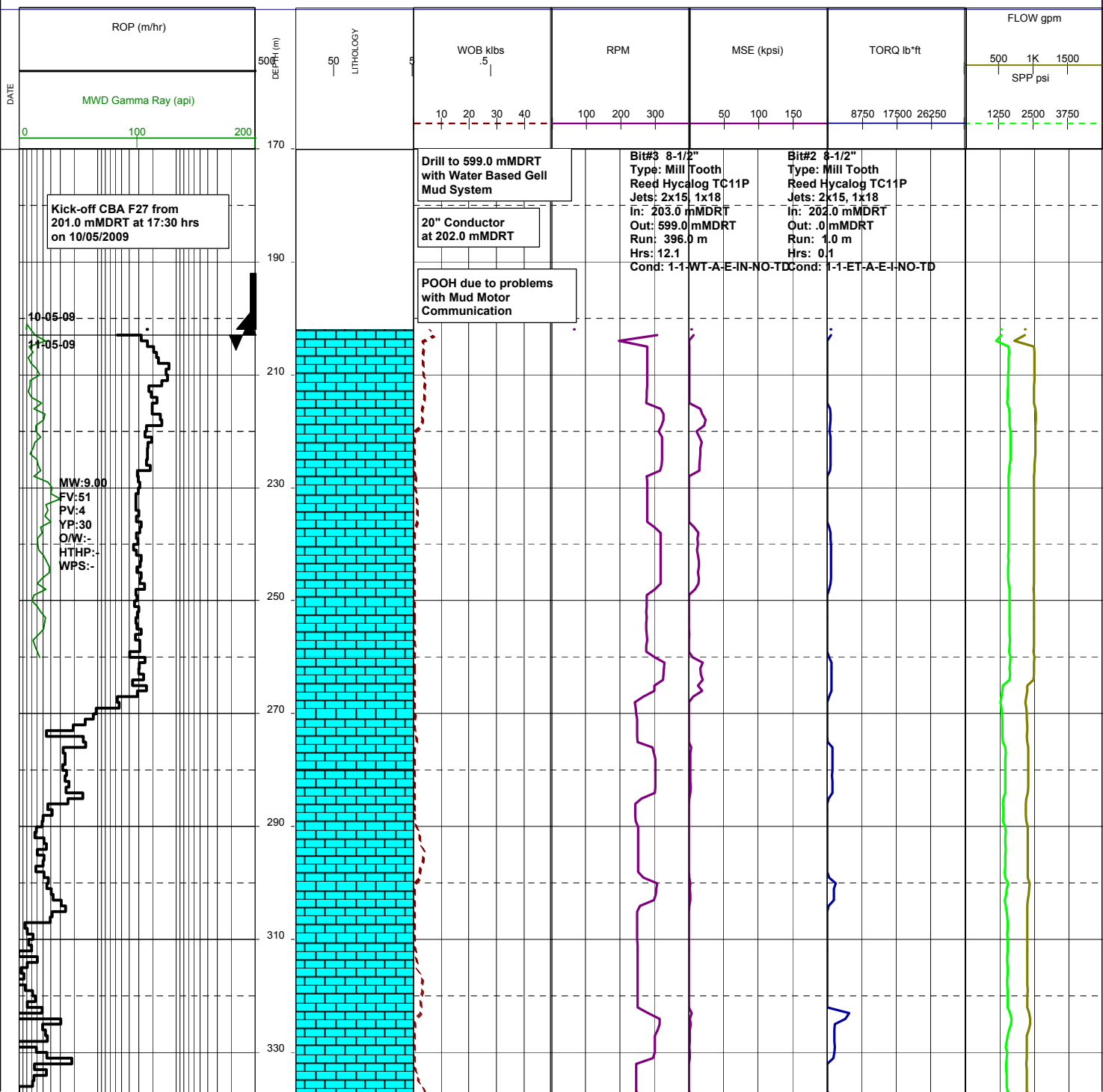
Company : ESSO AUSTRALIA LTD

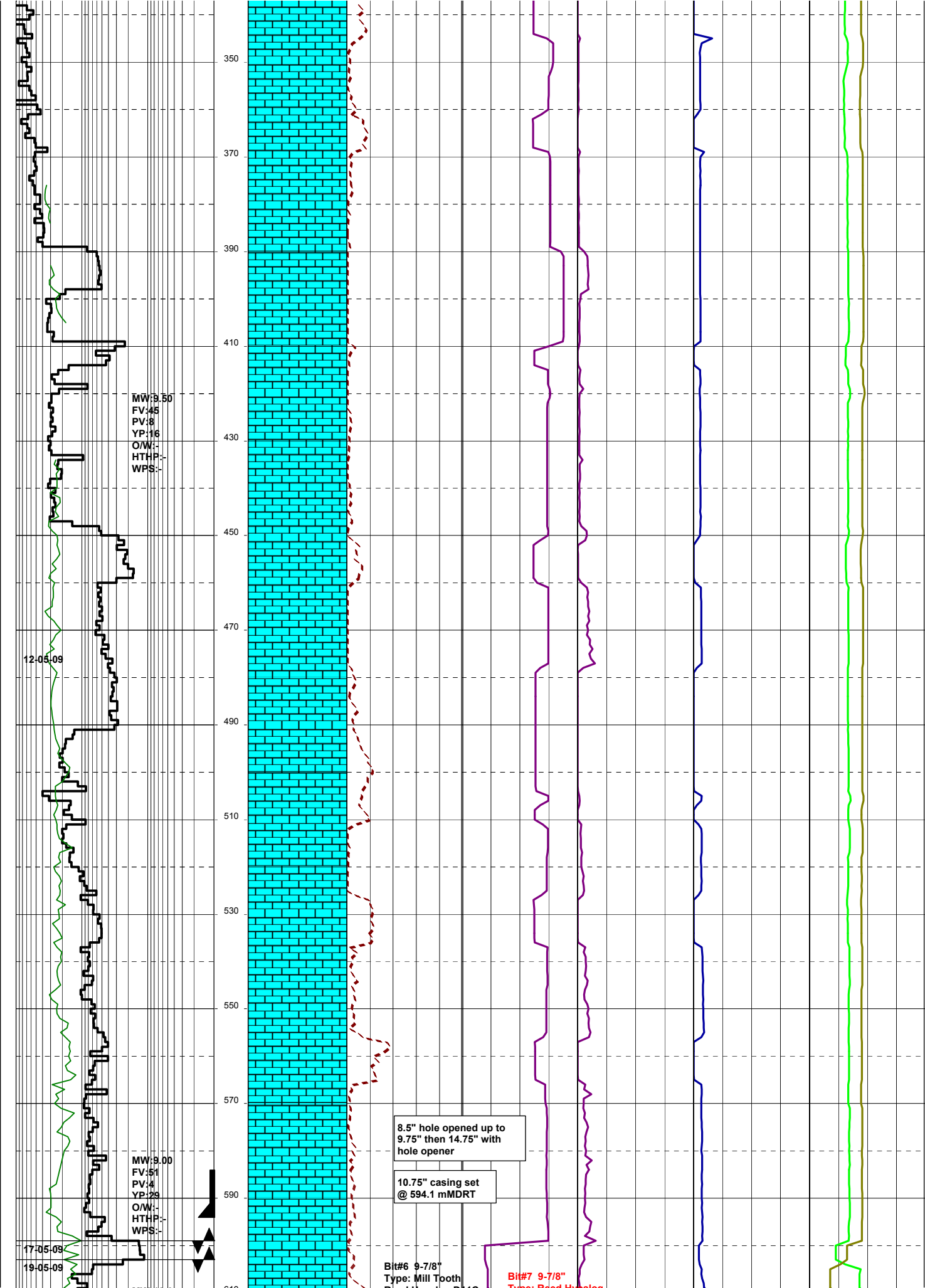
Country : AUSTRALIA

RT-MSL (m) : 41.0

RT-SEABED (m) : 120.0

Generated by geoNEXT Package





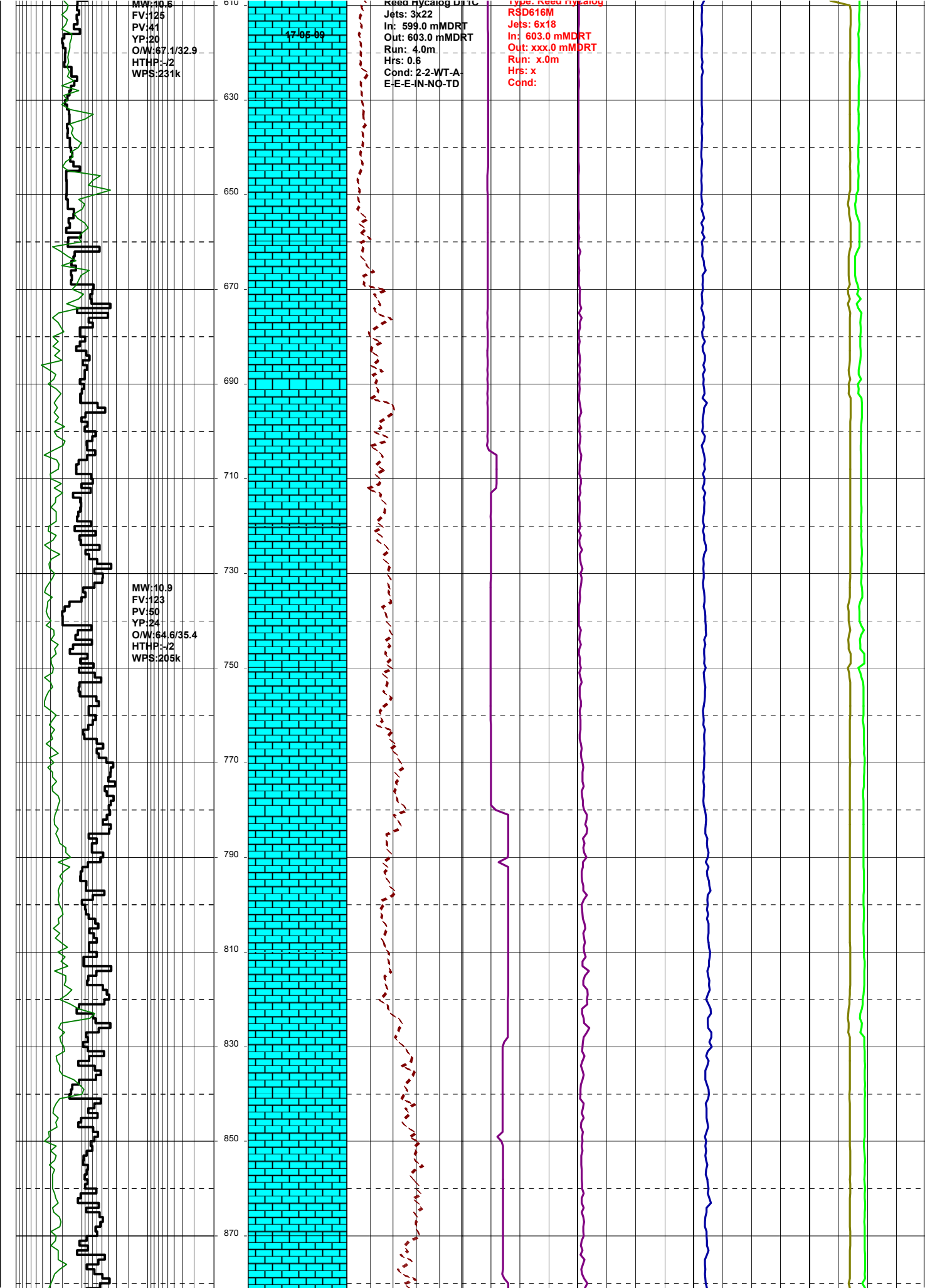
MW:10.8
FV:125
PV:41
YP:20
O/W:67.1/32.9
HTHP:-J2
WPS:231k

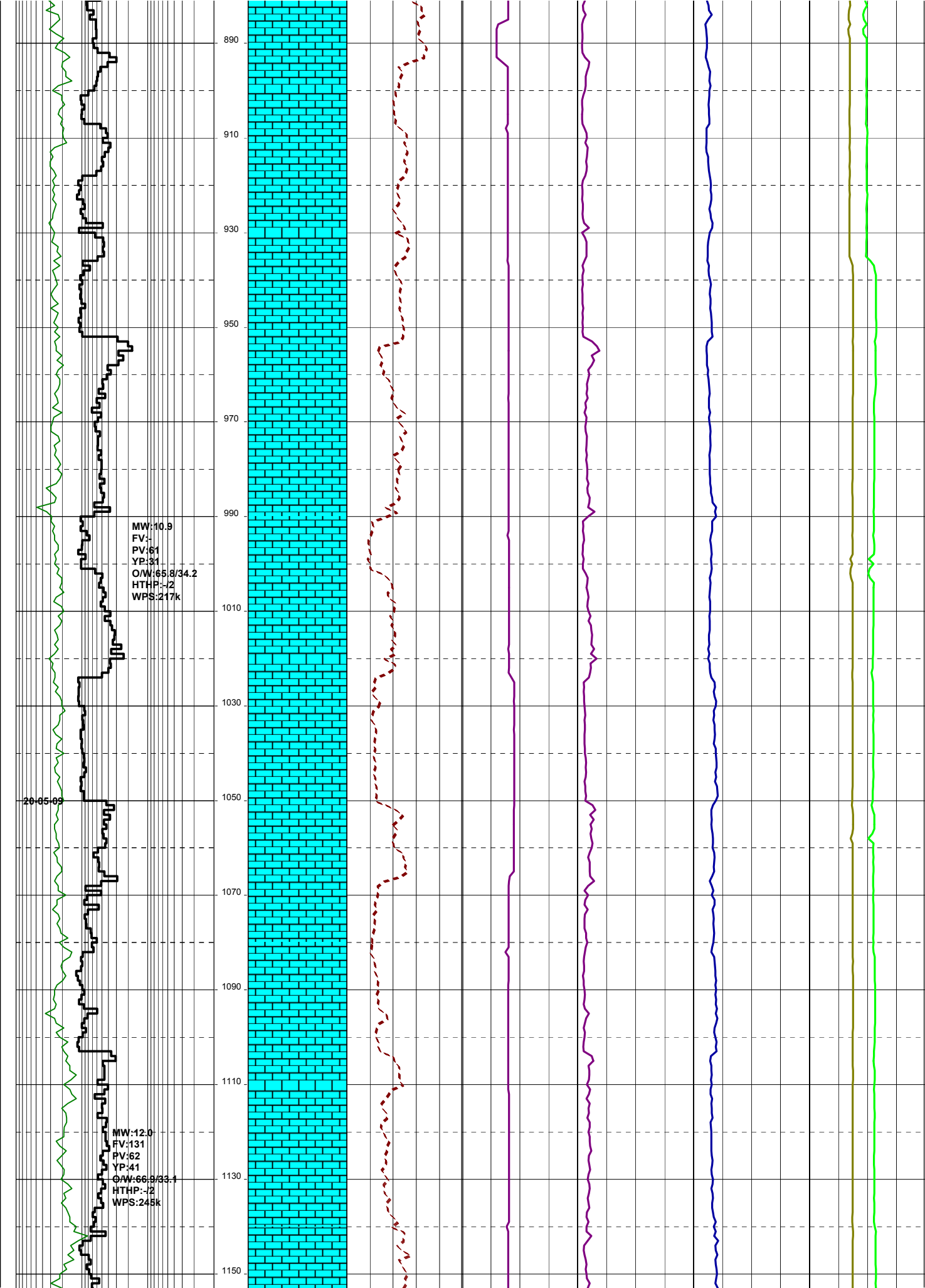
MW:10.9
FV:123
PV:50
YP:24
O/W:64.6/35.4
HTHP:-J2
WPS:205k

17-05-89

Read hydraulic
Jets: 3x22
In: 599.0 mMDRT
Out: 603.0 mMDRT
Run: 4.0m
Hrs: 0.6
Cond: 2-2-WT-A-
E-E-N-NO-TD

Type: new hydraulic
RSD616M
Jets: 6x18
In: 603.0 mMDRT
Out: xxx.0 mMDRT
Run: x.0m
Hrs: x
Cond:



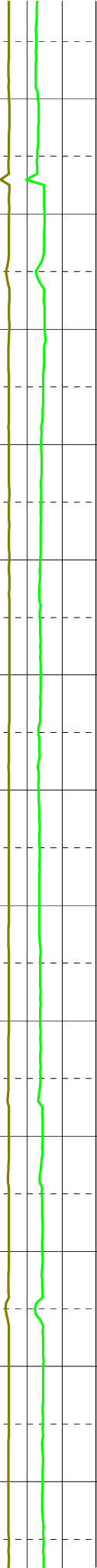
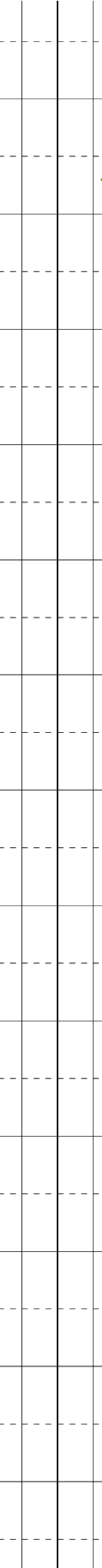
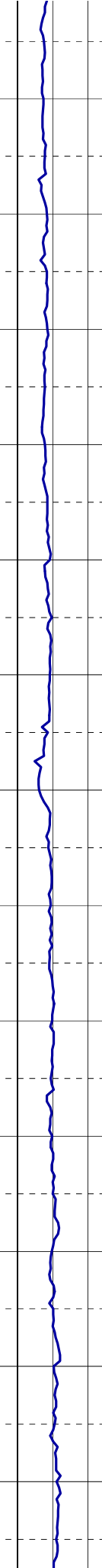
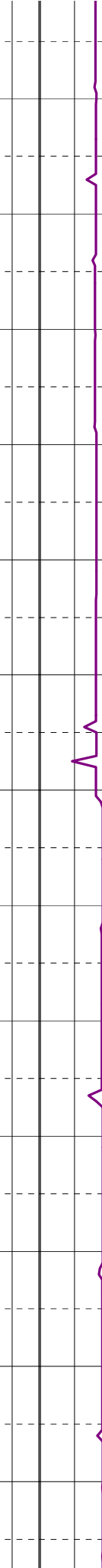
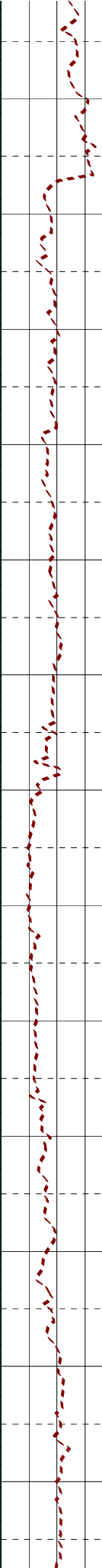
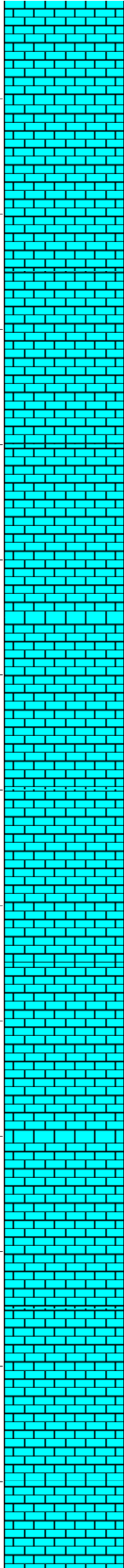


Pull back to 840.0 mMDRT to fix blown wash pipe. Stuck pipe @ 873.0 mMDRT

MW:12.0
FV:145
PV:61
YP:39
O/W:66.8/33.1
HTHP:-12
WPS:236k

MW:12.00
FV:129
PV:58
YP:29
O/W:69.5/30.5
HTHP:-12
WPS:241k

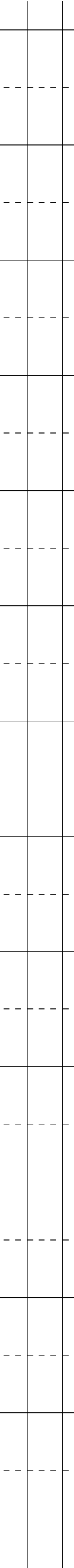
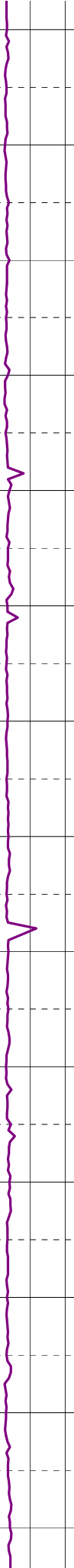
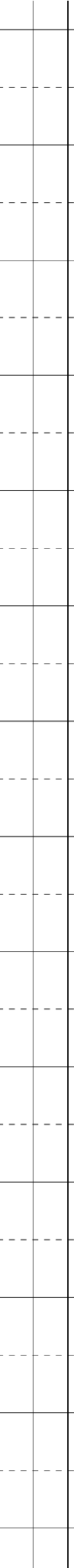
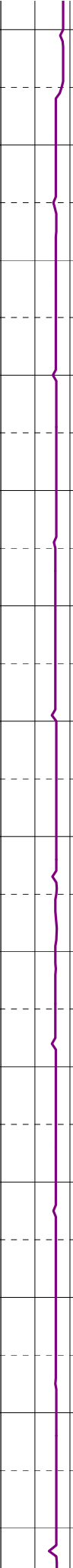
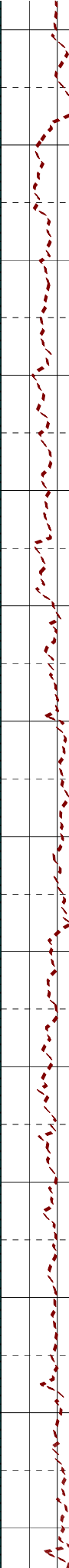
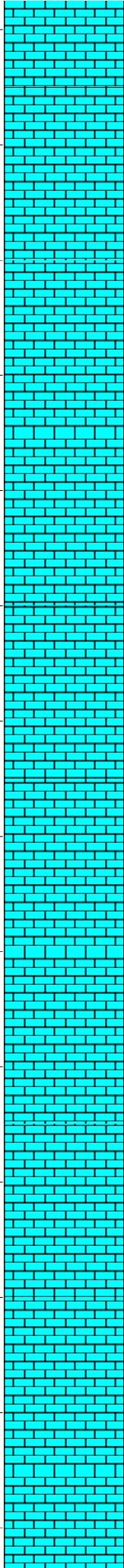
1170
1190
1210
1230
1250
1270
1290
1310
1330
1350
1370
1390
1410



21-05-08

MW:12.00
FV:155
PV:66
YP:32
O/W:69.5/30.5
HTHP:-12
WPS:244k

1430
1450
1470
1490
1510
1530
1550
1570
1590
1610
1630
1650
1670
1690

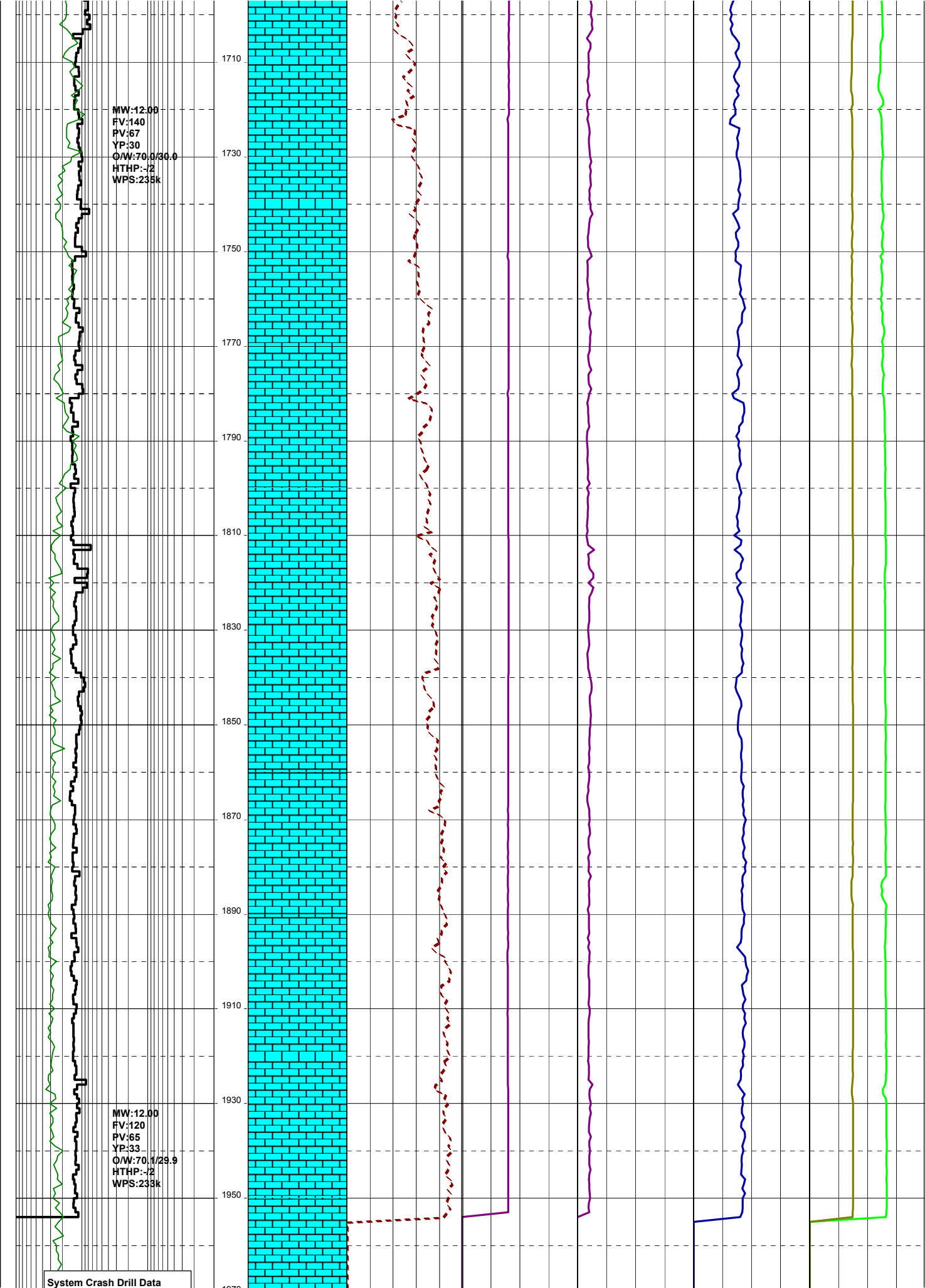


MW:12.00
FV:140
PV:67
YP:30
O/W:70.0/36.0
HTHP:-2
WPS:235k

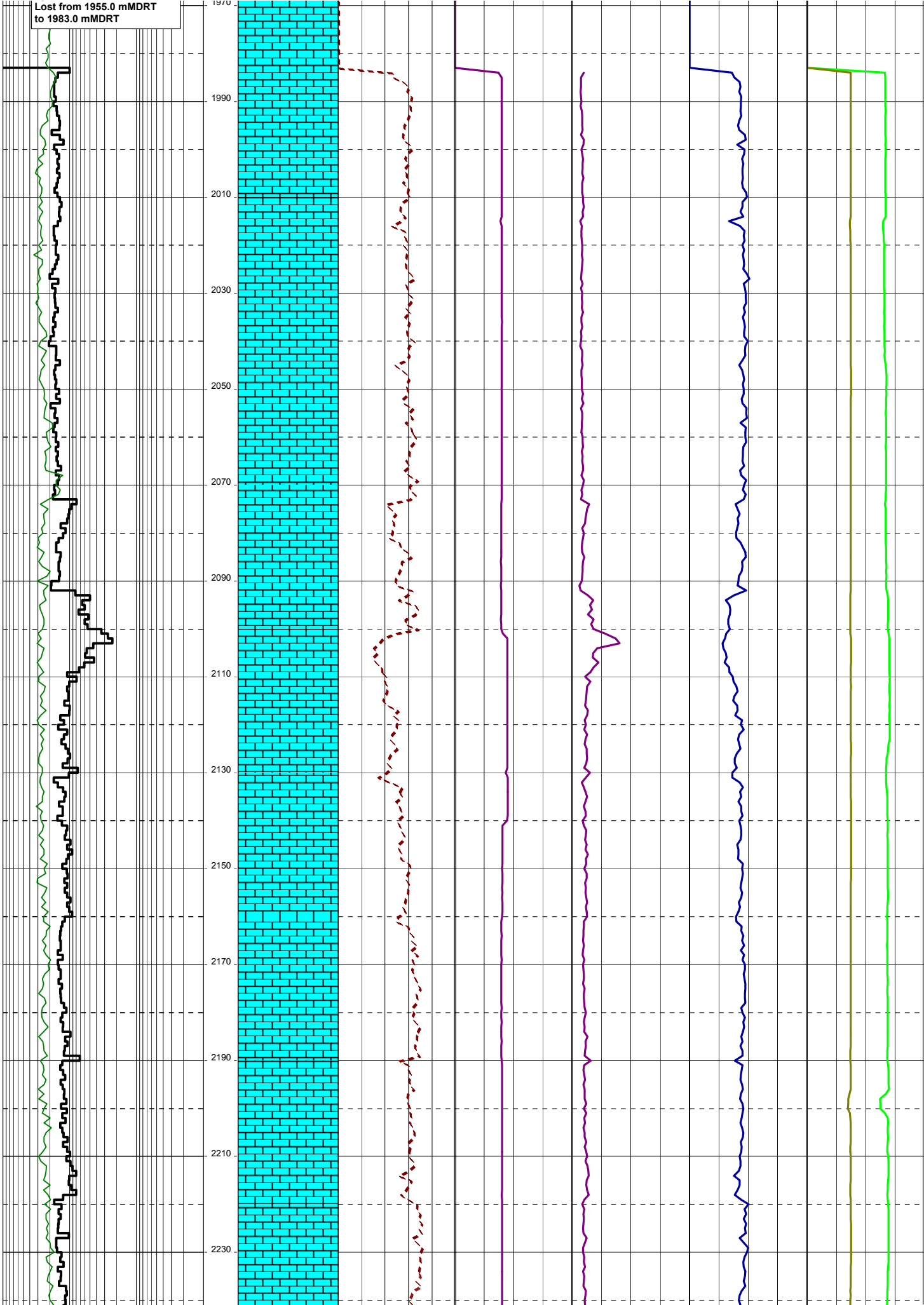
MW:12.00
FV:120
PV:65
YP:33
O/W:70.1/29.9
HTHP:-2
WPS:233k

System Crash Drill Data

1710
1730
1750
1770
1790
1810
1830
1850
1870
1890
1910
1930
1950



Lost from 1955.0 mMDRT
to 1983.0 mMDRT



22-05-09

MW:12.00
FV:138
PV:69
YP:34
O/W:69.9/30.1
HTHP:-2
WPS:238k

2250
2270
2290
2310
2330
2350
2370
2390
2410
2430
2450

